

เดอะ ราวีกัลยา แบงค็อก เวลเนส คิวซีน รีสอร์ท



THE

RAWEEKANLAYA

WELLNESS CUISINE RESORT

EST. 1870

A WELLNESS COLLECTION HOTEL

THE WELLNESS COLLECTION










## THE HERITAGE

The Raweekanlaya Bangkok was originally built in the late 1800's as the residence of the royal governess of His Majesty King Vajiravudh or Rama VI, the sixth monarch of Siam under the house of Chakri, considered the father of Thai nationalism. The residence is also remnant of Thewet Palace, which used to be located in the area.

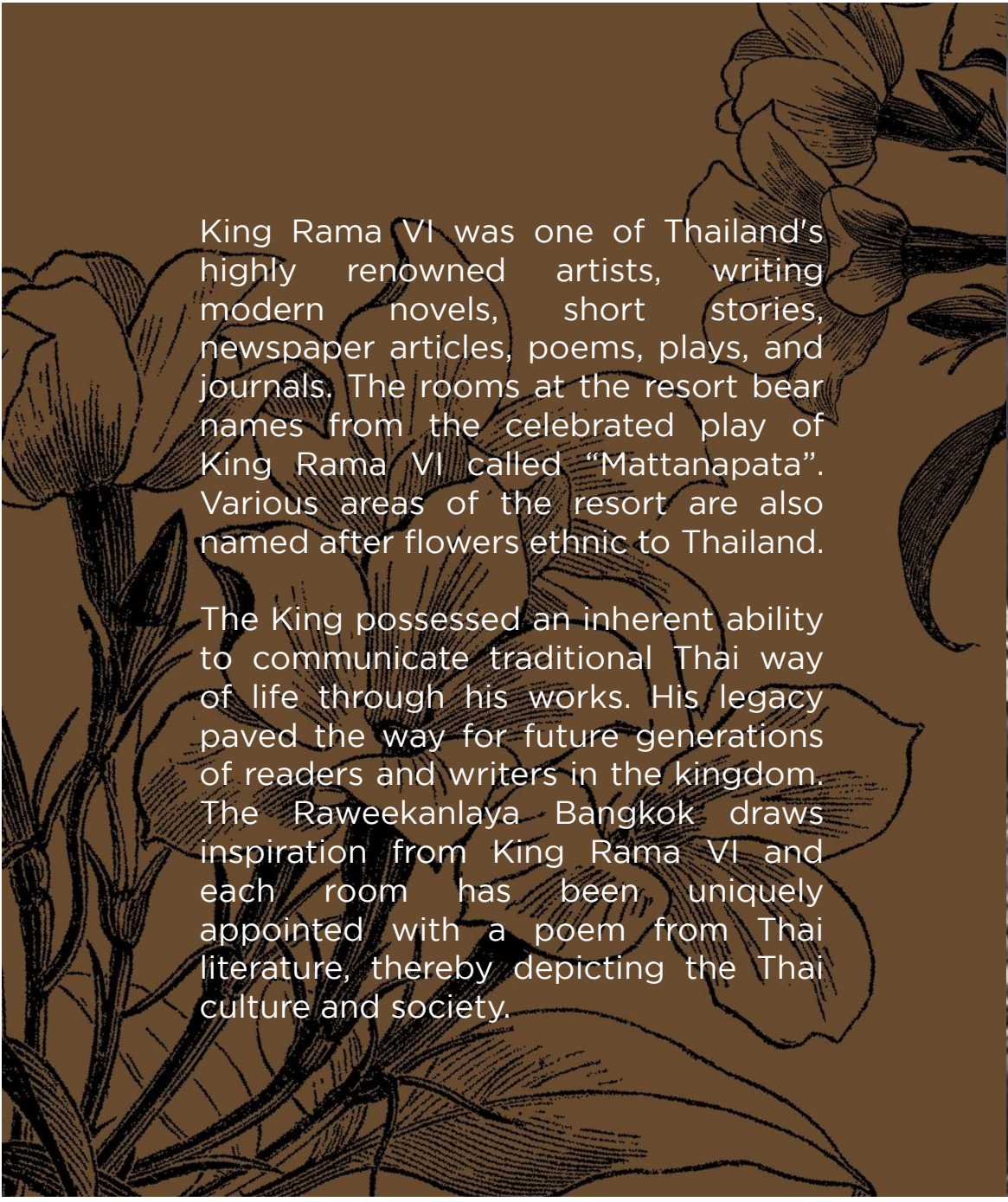


The background image shows a two-story house with light blue horizontal siding and a white gabled roof. The house has several windows with dark brown shutters, some of which are open. A balcony with a white railing is visible on the second floor. The ground floor has large glass windows and a wooden door. In the foreground, there is a large, leafy green tree on the left and a well-manicured green hedge on the right. A semi-transparent brown text box is overlaid on the left side of the image, containing two paragraphs of text.

The Raweekanlaya Bangkok was originally as the residence of the royal governess, Khun Tat Pheungboon Na Ayutthaya, of His Majesty King Vajiravudh or Rama VI. Khun Tat Pheungboon was also the mother of two noblemen, loyal and close aides to the King Rama VI.

One of the noblemen, Chao Phraya Ramrakob, was the youngest member of the Siam aristocracy to receive the title of Chao Phraya or Most Senior Commissioned Officer in the history of Rattanakosin era. His brother was Phraya Aniruttheva, the commissioned officer served as the rector of the Royal Military and the Master of Ceremony.





King Rama VI was one of Thailand's highly renowned artists, writing modern novels, short stories, newspaper articles, poems, plays, and journals. The rooms at the resort bear names from the celebrated play of King Rama VI called "Mattanapata". Various areas of the resort are also named after flowers ethnic to Thailand.

The King possessed an inherent ability to communicate traditional Thai way of life through his works. His legacy paved the way for future generations of readers and writers in the kingdom. The Raweekanlaya Bangkok draws inspiration from King Rama VI and each room has been uniquely appointed with a poem from Thai literature, thereby depicting the Thai culture and society.



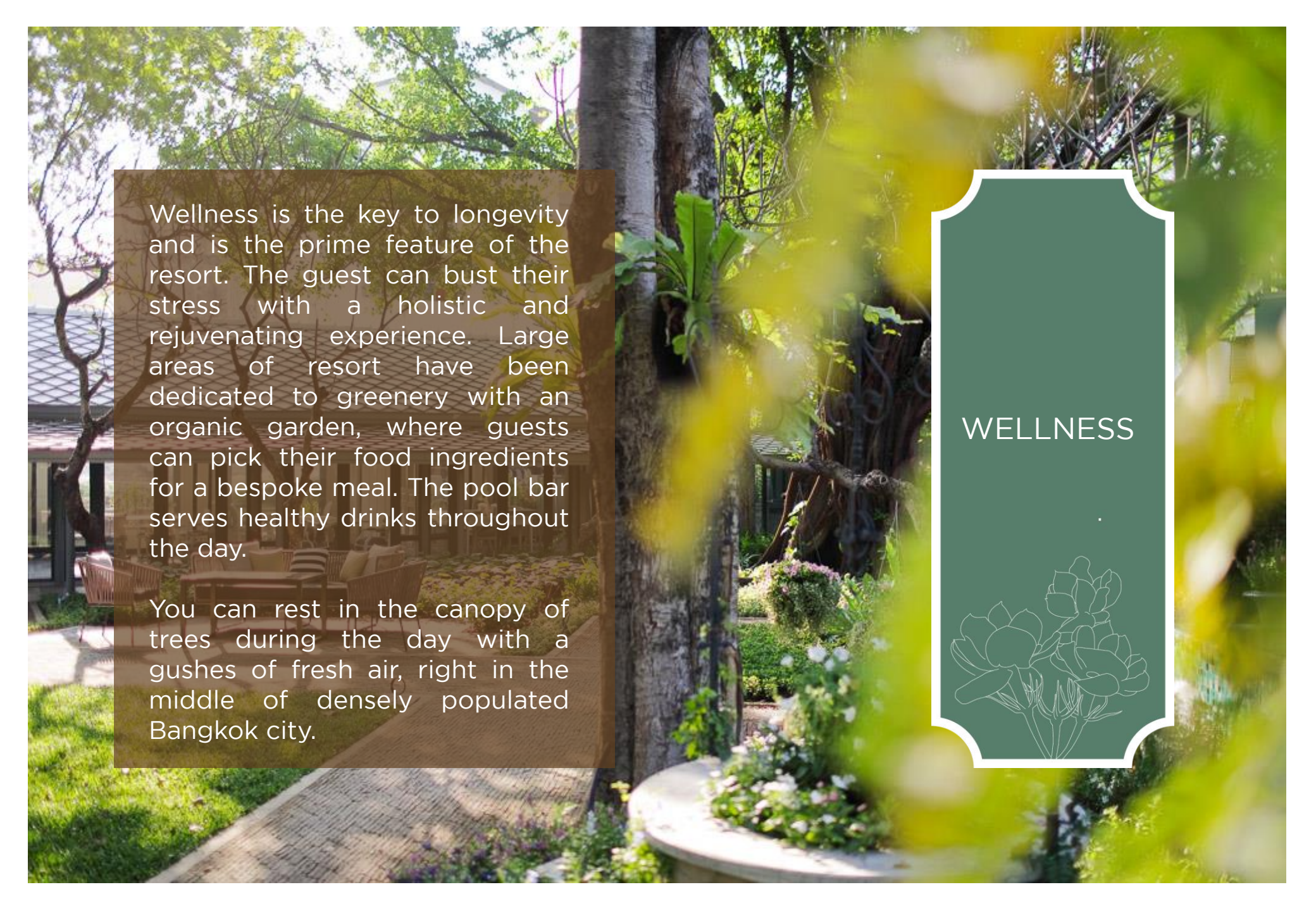
Vajiravudh or King Rama VI was the sixth monarch of Siam under the House of Chakri.

นอนไฟรโพบทุกษาคาด  
รุ่มรอกขเบรียบบาน  
ชรองลิตวลำเนียง  
ครุยาโนอาารณ

ประเลห์ลาคบบรรณสถาน  
พิดานกนกกำบังบน  
คือเลี้ยงพาทยกาหล  
ประโคมไทอุไทยฉนม







Wellness is the key to longevity and is the prime feature of the resort. The guest can bust their stress with a holistic and rejuvenating experience. Large areas of resort have been dedicated to greenery with an organic garden, where guests can pick their food ingredients for a bespoke meal. The pool bar serves healthy drinks throughout the day.

You can rest in the canopy of trees during the day with a gushes of fresh air, right in the middle of densely populated Bangkok city.

WELLNESS





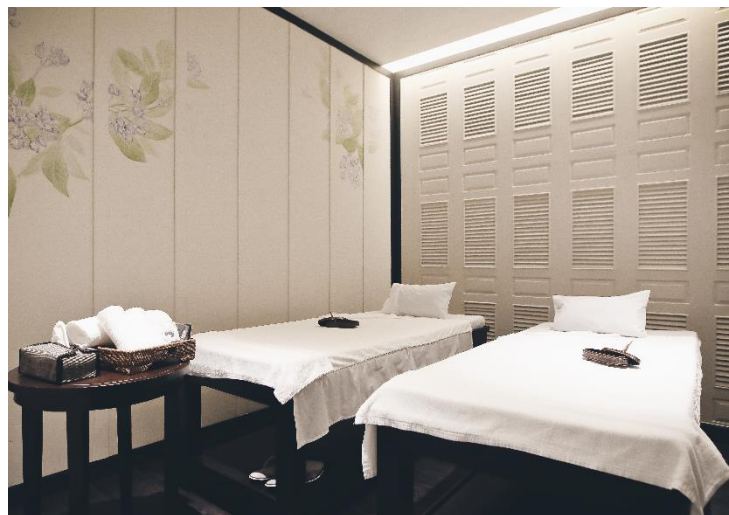


## IMPERIAL SPA

Amidst the resort is the Imperial Spa, which offers traditional Thai massage therapies which have been carried down across generations. The therapists have been trained at **Phothalai** of Wat Po descent.

Wat Po - a temple which also became Thailand's first ever university, is a bastion of Thai medical heritage and Thai massage, and with astonishing foresight the temple founded the Wat Po Traditional Medical School more than 60 years ago. **Phothalai - Wellness & Longevity** is a continuation of "Tangtrongjit" a family tradition riding on the back of four generations of knowledge and experience, protecting a refining ancient arts and techniques that have stood the test of time.







Given its strategic location, Thailand (or the Kingdom of Siam as it was once known) had become an essential link in international trade during the reign of King Rama V and maintained an active and diverse relationship with many countries. In line with the internationalization, the Thai cuisine evolved under the reigns of King Chulalongkorn (Rama V) and King Vajiravudh (Rama VI), with influx of western elements into the cuisine of the era. The Rawaekanlaya Bangkok, being the house of the royal governess of King Rama VI, reminiscences into the transitional cuisines of the time and brings alive best of both western as well as Thai culinary experiences.

## CUISINE







## THE RAWEEKANLAYA DINING

The preparations at Raweekanlaya have been blissfully crafted while placing a high emphasis on health and sustainability. The ingredients include healthy and natural ingredients like organic brown rice, sea salt and seasonal organic produce from small scale-farmers, thereby also supporting the local community. A number of products are sourced from international artisan producers, including the ones from Thailand.







## You Pick. We Cook.

The Raweekanlaya Dining strives to make your experience at Raweekanlaya truly personal and memorable. Guests are invited to pick the major ingredients from our organic garden, guided by our Chef and a special dish is prepared from the pick.







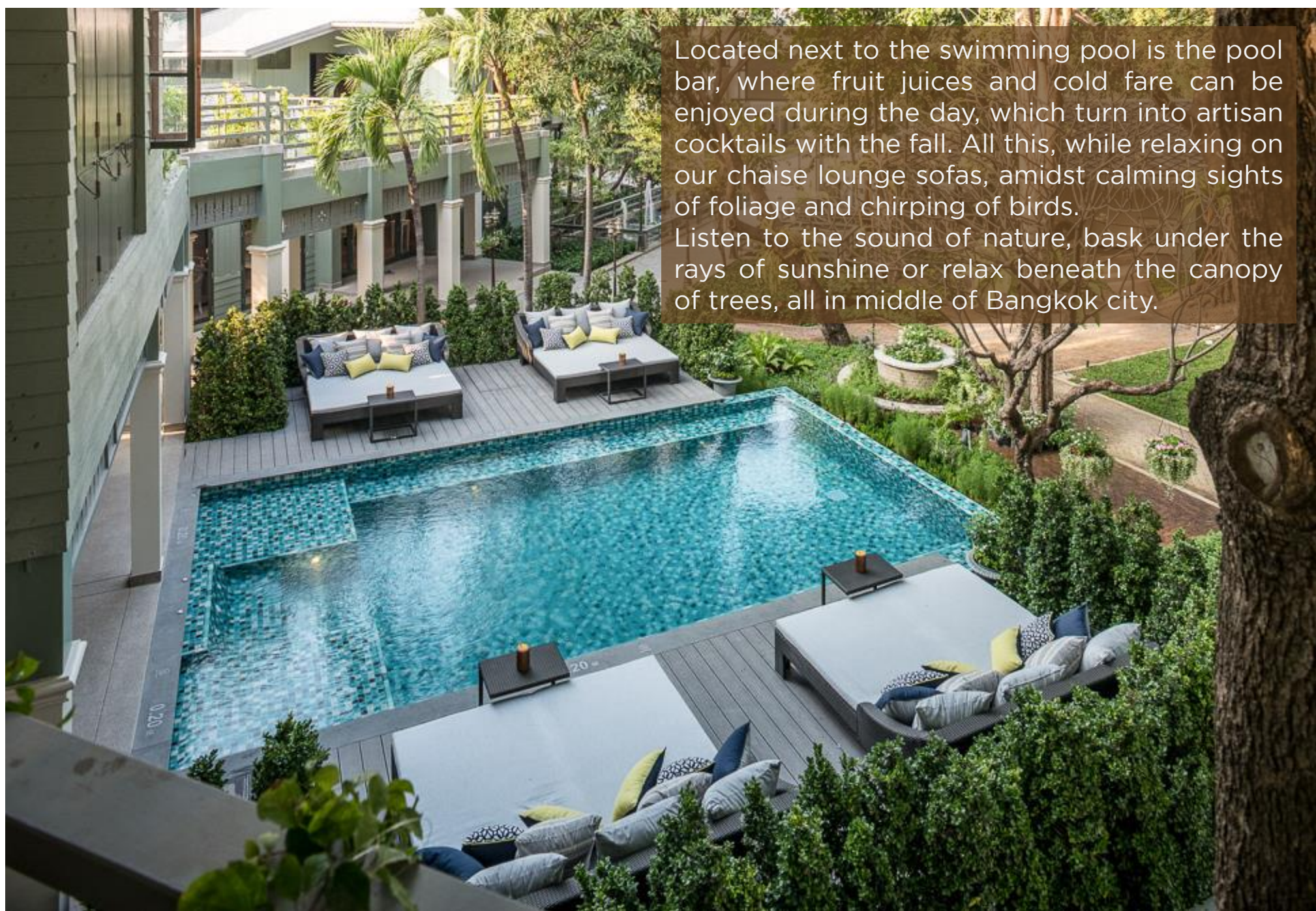


The Raweekanlaya Bangkok features 38 guest rooms carefully designed to reflect the heritage of Old-Siam with contemporary touches. It is a true urban resort with over 900 square meters of lush greenery, highlighted by a 120 years old Banyan tree.

RESORT







Located next to the swimming pool is the pool bar, where fruit juices and cold fare can be enjoyed during the day, which turn into artisan cocktails with the fall. All this, while relaxing on our chaise lounge sofas, amidst calming sights of foliage and chirping of birds. Listen to the sound of nature, bask under the rays of sunshine or relax beneath the canopy of trees, all in middle of Bangkok city.









## ACCOMMODATION

King Rama VI was one of Thailand's highly renowned artists, writing modern novels, short stories, newspaper articles, poems, plays, and journals. The rooms at the resort bear names from the celebrated play of King Rama VI called "Mattanapata". Guest rooms at the resort reflect a sophisticated interplay between modern comforts and traditional Thai décor of the Rama VI era with artistic elements. The rooms have been carefully decorated to make you feel at home, with their individuality and ambience of warmth. Your stay would be personal with a unique Thai poem dedicated to each guest room.







## MONTHA ROOM

ROOM SIZE 19-23 m2

Stay pleasantly in this well-appointed room on the second floor at the City Wing with a King bed. The rooms were well preserved from the previous owner. In order to keep it as the most original from the past, we put the light that imitate the real sunlight to make you feel warm and cozy. Montha Rooms offer the Old-Siam living ambiance with modern amenities, detailed decoration ideal for both leisure and business travellers who love discovering hotels with history and storytelling.

### Features:

- Air conditioning
- Free in-room water
- 32-inch LED TV
- Telephone
- Free WIFI
- Crib or rollaway bed on request
- Coffee/tea making facilities
- Hair dryer
- Safety box
- Make up mirror
- Umbrella
- Daily turndown service
- Wake-up service
- Room service 11:00-22:30 hrs.







## MATTANEE SUPERIOR

ROOM SIZE 24-33 m2

Elegantly appointed, Mattanee Superior Rooms located on the third floor at the City Wing. You can feel the touch of local neighbour a right from the window. The bedroom is coloured in clean white to highlight the natural light. Room décor and amenities reflect that of the Old-Siam with hints of a tranquil resort. En-suite bathroom includes shower cubicle, clean minimalist decoration, and full amenity set including selected mini bars.

### Features:

- Air conditioning
- Free in-room water
- 32-inch LED TV
- Telephone
- Free WIFI
- Crib or rollaway bed on request
- Coffee/tea making facilities
- Hair dryer
- Safety box
- Make up mirror
- Umbrella
- Daily turndown service
- Wake-up service
- Room service 11:00-22:30 hrs.







## MATTANEE EXECUTIVE

ROOM SIZE 24-33 m2

Well appointed, the Executive Rooms located on the second and third floor at the City Wing. The window is facing to Khlong Phadung Krung Kasem (Phadung Krung Kasem Canal) and classical government building. The room is perfect for all travellers who would like to experience local life style. The bedroom is coloured in clean white to highlight the natural light. Room décor and amenities reflect of the Old-Siam with hints of a tranquil resort. En-suite bathroom includes shower cubicle, clean minimalist decoration, and full amenity set including selected mini bars.

### Features:

- Air conditioning
- Free in-room water
- 32-inch LED TV
- Telephone
- Free WIFI
- Crib or rollaway bed on request
- Coffee/tea making facilities
- Hair dryer
- Safety box
- Make up mirror
- Umbrella
- Daily turndown service
- Wake-up service
- Room service 11:00-22:30 hrs.







## MATTANA DELUXE

ROOM SIZE 20-28 m2

Escape to an unforgettable greenery lush garden surrounding with song from birds at Mattana Deluxe. The rooms are designed with warm tones, stylish décor to reflect both the heritage and modern world. Room décor and amenities reflect of the Old-Siam with hints of a tranquil resort. En-suite bathroom includes shower cubicle, clean minimalist decoration, and full amenity set including selected mini bars.

### Features:

- Air conditioning
- Free in-room water
- 32-inch LED TV
- Telephone
- Free WIFI
- Crib or rollaway bed on request
- Coffee/tea making facilities
- Hair dryer
- Safety box
- Make up mirror
- Umbrella
- Daily turndown service
- Wake-up service
- Room service 11:00-22:30 hrs.







## MATTANA PREMIER

ROOM SIZE 20-28 m2

Nestled within the Garden Wing where the main house is located. Overlooking the vast resort parklands, Mattana Premier Rooms offer the perfect combination of scenic view of lush landscape and serenity. The rooms feature Twin beds and en-suite bathrooms. Both are finished with natural fabrics of calming hues. En-suite bathroom includes shower cubicle, clean minimalist decoration, and full amenity set including selected mini bars.

### Features:

- Air conditioning
- Free in-room water
- 32-inch LED TV
- Telephone
- Free WIFI
- Crib or rollaway bed on request
- Coffee/tea making facilities
- Hair dryer
- Safety box
- Make up mirror
- Umbrella
- Daily turndown service
- Wake-up service
- Room service 11:00-22:30 hrs.





## MATTANA SUITE

ROOM SIZE 30 m2

With only room this exclusive category available, Mattana Suite rooms are located at a prime spot of the resort in the Garden Wing with a direct view of the lush greenery. One is on the ground floor conveniently connected to natural landscape, and with another on the second floor, overlooking the whole scenic view of the resort.



### Features:

- Air conditioning
- Free in-room water
- 32-inch LED TV
- Telephone
- Free WIFI
- Crib or rollaway bed on request
- Coffee/tea making facilities
- Hair dryer
- Safety box
- Make up mirror
- Umbrella
- Daily turndown service
- Wake-up service
- Room service 11:00-22:30 hrs.





## GOVERNESS SUITE

ROOM SIZE 45 m2

Our spacious and unique 45 square meters Governess Suite, offers a 180° city view in the City Wing that can be enjoyed from the comfort of luxurious King bed with a separate living area. This beautifully appointed Suite Room was thoughtfully designed for maximum comfort and relaxation.

### Features:

- Air conditioning
- Free in-room water
- 32-inch LED TV
- Telephone
- Free WIFI
- Crib or rollaway bed on request
- Coffee/tea making facilities
- Hair dryer
- Safety box
- Make up mirror
- Umbrella
- Daily turndown service
- Wake-up service
- Room service 11:00-22:30 hrs.





## TAYWET SUITE

ROOM SIZE 31 m2

Located on the first floor, this one and only exclusive suite was designed especially for our guests seeking a full resort style experience with discreetness. Taywet Suite features a King bed with an en-suite bathtub. It transforms into a private sanctuary with a private outdoor jacuzzi.



### Features:

Private outdoor jacuzzi  
Bathtub  
Air conditioning  
Free in-room water  
32-inch LED TV  
Telephone  
Free WIFI  
Crib or rollaway bed on request

Coffee/tea making facilities  
Hair dryer  
Safety box  
Make up mirror  
Umbrella  
Daily turndown service  
Wake-up service  
Room service 11:00-22:30





## MEETINGS & EVENTS



No.	Venue	Sqm	High Step of Ceiling (m)	Length & Width (m)	Seating Capacity (Minimum of 20 persons)					
					I-Shape	U-shape	Classroom	Theatre	Buffet	Cocktail
1	DOK RAK	104.25	3.00	7.50 x 13.90	36	36	42	80	60	80
2	DOK PHAYOM I	71.04	2.5	4.80 x 14.80	30	30	36	50	30	50
3	DOK PHAYOM II	16.45	2.5	3.50 x 4.70	For Coffee Break and Lunch					
4	DOK PHUD BAR	46.64	2.5	5.30 x 8.80	10	10	15	25	20	25
5	DOK PHUD ROOM	12.16	2.5	3.20 x 3.80	For 6-8 persons (Round Table)					



For new ideas to flow, a relaxing setting is essential. Under the shade of trees bathed in sunshine, meetings at The Raweekanlaya Bangkok are always inspiring. From our meeting rooms to our lush green gardens is but a step away. From a surprise engagement ceremony to a beautiful wedding in the garden, the hotel is perfect for formalizing romance. Surrounded by majestic trees and imbued with timeless Thai architecture and grand heritage-rich design, the premises itself creates a sense of occasion.

**Meeting Space:** 16 - 104 sqm.









เดอะ ราวีคัลยา แบงค็อก เวลเนส คิวซีน รีสอร์ท



THE

RAWEEKANLAYA

WELLNESS CUISINE RESORT

EST. 1870

A WELLNESS COLLECTION HOTEL

The Raweekanlaya Bangkok  
Wellness Cuisine Resort

164-172 Krung Kasem Road, Bang Khun Phrom  
Phra Nakon, Bangkok  
10200 Thailand

T: +66 (0) 2 628 5999  
E: [rsvn@raweekanlaya.com](mailto:rsvn@raweekanlaya.com)

[www.raweekanlaya.com](http://www.raweekanlaya.com)